

ONLINE AUCTION

To Bid Online & Register, Please Visit
www.irsauctions.com

Due to plant closure, assets of



LATE MODEL WELL MAINTAINED FABRICATING & METALWORKING MACHINERY



Online Bidding Starts: Thursday, July 2nd at 10am Local Time
Online Bidding Ends: Friday, July 10th
Assets Located In Bowling Green, Kentucky

Hilco Industrial, LLC

Auctioneers • Liquidators • Appraisers

31555 West Fourteen Mile Road, Suite 207
Farmington Hills, MI 48334

Ph: 248.254.9999 • Fx: 248.254.9995

www.hilcoind.com

Auction is being held in cooperation with



P.O. Box 5086 • York, PA 17405 • ph 717.854.0316

www.irsauctions.com

**To Bid Online &
Register, Please Visit
www.irsauctions.com**

ONLINE AUCTION

Due to plant closure, assets of



Online Bidding Starts

Friday, June 26th

Beginning at 10am Local Time

Online Bidding Ends

Friday, July 10th

Please check www.irsauctions.com
for closing times

Preview Dates & Location

Monday, July 6th Thru Friday, July 10th
(No Weekends or Holidays)

245 Porter Pike • Bowling Green, KY

By Appointment Only. Please contact

Tim Pfister at 847.313.4747 or

Email tpfister@hilocind.com to
schedule an appointment.

Directions to Preview

From Detroit Metropolitan Airport:

Exit airport and merge onto I-94 E via the ramp to Detroit. Go 17.8 miles then take exit 216A to merge onto I-75 N. Go 21.8 miles and take exit 74 for Adams Rd. Turn left at N Adams Rd (signs for Pontiac). Turn left at Auburn Rd. Turn left at Auburn Ct. Turn right to stay on Auburn Ct. Turn left and the destination will be on the right.

Further Information

- A buyer's premium of 10% will be in effect. The auction will be conducted in English, accepting U.S. Currency only.
- Removal Deadline is Friday, July 24th with Hours of Removal between 8am to 4pm Monday thru Friday. After July 24th at 4pm buyer will incur a cost of \$500 daily for entry into the facility.
- For further information please contact Tim Pfister at 847.313.4747 or Email tpfister@hilocind.com
- For Customer Service please call 717.854.0316

PENLOYD ONLINE AUCTION



CNC TURRET PUNCH PRESS

- 1 - AMADA VIPROS 255 CNC TURRET PUNCH PRESS, S/N AVP55232, Fanuc 18-P CNC Control (2000)

CNC HYDRAULIC PRESS BRAKES

- 1 - STRIPPIT/LVD 150-JS-10 10' x 150-TON HYD. CNC PRESS BRAKE, S/N 26830 (2000)
- 1 - ACCURPRESS 76010 10' x 60-TON HYD. CNC PRESS BRAKE, S/N 4201 (1997)

SHEARS

- 1 - STRIPPIT/LVD JS-C 25/10 10' x 1/4" HYDRAULIC POWER SQUARING SHEAR, S/N 27176 (2000)
- 1 - BERTSCHE 12' x 10-GA. MECHANICAL POWER SQUARING SHEAR, S/N 6559
- 1 - NATIONAL NH5210 4' x 10 GAUGE HYDRAULIC POWER SHEAR, S/N 702-697 (1997)

HARDWARE INSERTION PRESS

- 1 - HAEGER 618 6-TON HYDRAULIC HARDWARE INSERTION PRESS, S/N 06H-00915 (2000)

HYDRAULIC IRONWORKER

- 1 - GEKA HYD 80 80-TON HYDRAULIC IRONWORKER, S/N 7034 (1996)

ANGLE ROLL

- 1 - EAGLE CPH 40 40 MM POWER ANGLE ROLL, S/N 2000C023 (2000)
- 1 - BEND TEC BT-2000 HYDRAULIC TUBE BENDER

FINISHING

- 1 - TIMESAVERS 137-1HPM 36" DRY BELT SANDER, S/N 27839M
- 1 - 10' STRAIGHT LINE BELT SANDER
- 1 - 6 SHOP CARTS AND BELTS FOR TIMESAVER MACHINE

SHEET METAL BENDING

- 1 - CHICAGO DREIS & KRUMP SBA-104 SPEEDEBENDER, S/N 119700
- 1 - CHICAGO DREIS & KRUMP BPU812-6 8' x 12 GAUGE MANUAL BOX & PAN BRAKE, S/N 326831T

BAND SAWS

- 1 - MEP SHARK 280 SX 10" AUTOMATIC MITER HORIZONTAL BAND SAW, S/N 015939 (1996)
- 1 - WELLSAW 1016 10" x 16" MANUAL HORIZONTAL BAND SAW, S/N 4111
- 1 - JET VBS-1610 16" VERTICAL BAND SAW, S/N 611674

COLD SAWS

- 1 - SCOTCHMAN CPO350LT 12" MANUAL COLD SAW, S/N 52610600
- 2 - SCOTCHMAN CPO275HT 10" MANUAL COLD SAWS, S/Ns 19680496 & 17360295

LATE MODEL WELL MAINTAINED FABRICATING & METALWORKING



SAWS

- 1 - DELTA 33-411 16" RADIAL ARM SAW, S/N 93B05231
- 1 - DEWALT DW871 14" ABRASIVE CHOP SAW
- 1 - CRAFTSMAN 10" TABLE SAW

WELDING

- 1 - MILLER CP-300 300-AMP MIG WELDING SYSTEM, S/N KC229701
- 1 - LINCOLN POWER MIG 300 300-AMP MIG WELDING SYSTEM, S/N K1694-1-11097-U1030801618
- 1 - MILLER CP-302 300-AMP MIG WELDING SYSTEM, S/N KJ041076
- 5 - MILLER SYNCROWAVE 250 250-AMP TIG WELDING SYSTEMS, S/Ns KE757875, KG241243, KA912192, KG241197 & S/N KG053653
- 1 - LINCOLN AC-225 225-AMP ARC WELDER, S/N 9422-309
- 2 - LINCOLN SQUAREWAVE TIG 175 175-AMP TIG WELDING SYSTEMS, S/Ns 10387-U1990308844 & 10397-U1990309949
- 1 - MILLER MILLERMATIC 130 130-AMP MIG WELDING SYSTEM, S/N KG232980
- 1 - HOBART HANDLER 135 100-AMP MIG WELDING SYSTEM, S/N LB113532
- 1 - LINCOLN SP-85 85-AMP MIG WELDING SYSTEM, S/N 9430-AC767434
- 1 - CUSTOM STUD WELDING SYSTEM

Welding Tables, Rack With Misc. Welding Contents, Welding Tank Rack, 5' Welding Fixture, (2) Tables With Misc. Wire Spools, 5' Rotating Welding Table, Misc. Welding Supplies With Pneumatic Tools & Table

PLASMA CUTTING

- 1 - ESAB PCM-875 60-AMP MANUAL PLASMA CUTTING SYSTEM, S/N PF-JO20123
- 1 - THERMAL-DYNAMICS POWERMAX 800 50-AMP MANUAL PLASMA CUTTING SYSTEM, S/N 800-005084

HYDRAULIC & PNEUMATIC PRESSES

- 1 - HYDRAPOWER SS-0702512 HYDRAULIC PRESS, S/N G4003
- 5 - PNEUMATIC PRESSES WITH STANDS

ROBOT CELLS

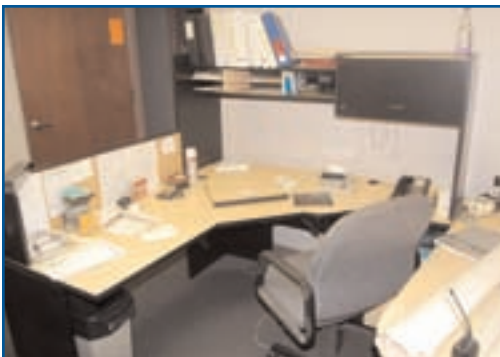
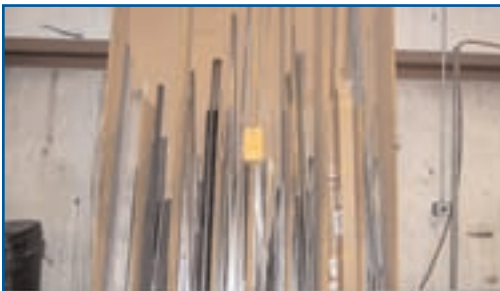
- 1 - MILLER ROBOT GRINDING AUTOMATION CELL
- 1 - MILLER WELDING AUTOMATION CELL



To Bid Online & Register,
or For Further Information, Please Visit

www.irsauctions.com

LATE MODEL WELL MAINTAINED FABRICATING & METALWORKING



SINGLE & DOUBLE SPINDLE BUFFING & POLISHING LATHES

- 1 - HAMMOND 5-RR0-C DOUBLE SPINDLE BUFFING MACHINE, S/N 9775
- 1 - MARSCHKE DOUBLE SPINDLE BUFFING MACHINE, S/N 9020
- 1 - RITE SPEED DOUBLE SPINDLE BUFFING MACHINE
- 4 - HAMMOND DOUBLE SPINDLE BUFFING MACHINES
- 1 - ACME SINGLE SPINDLE BUFFING MACHINE, S/N 8127
- 1 - DOUBLE SPINDLE BUFFING MACHINE

ROLL FORMING

- 1 - CUSTOM ROLL FORMING MACHINING
- 2 - CRATES OF WALL STUD ROLL FORM TOOLING

MATERIAL HANDLING

- 1 - DREXEL R60SL-L 6000 LBS. LPG SWING MAST FORKLIFT TRUCK, S/N 23009-4-9
- 1 - DREXEL R40SL-L 4000 LBS. LPG SWING MAST FORKLIFT TRUCK, S/N 23008-4-94
- 1 - CLARK ECS30 3000 LBS. ELECTRIC FORKLIFT TRUCK, S/N E35702347755FB1289
- 2 - PRESTO 1000 LBS. HYDRAULIC SCISSOR LIFT TABLES
- 1 - 5000 LBS. PALLET JACK
- 1 - BLUE GIANT 5000 LBS. PALLET JACK
- 1 - LIFT RITE 5000 LBS. PALLET JACK
- 1 - HERCULES FORKLIFT WORKMAN'S PLATFORM
- 1 - MINUTEMAN HAKO MANUAL FLOOR SWEEPER
- 1 - REGAL MANUAL HYDRAULIC LIFT
- 2 - HARPER 2-TANK CART AND INCLINED 2-TANK CART DOLLY

Strapping Cart With Tools, Shop Carts, 10', 8' & 6' Fiberglass Step Ladders

DRILL PRESSES

- 1 - JET JDP-20MF 20" STEP PULLEY DRILL PRESS
- 1 - JET JDP-14JF 14" STEP PULLEY DRILL PRESS, S/N 2111058
- 3 - DELTA 14-070 PEDESTAL DRILL PRESSES

AIR COMPRESSORS

- 1 - INGERSOLL-RAND SSR-EP40U 40-HP ROTARY SCREW AIR COMPRESSOR
- 1 - INGERSOLL-RAND SSR-2000 ROTARY SCREW AIR COMPRESSOR (Not in Service)

DUST COLLECTORS

- 1 - DUST HOG FJH16-2-2H55 8-CANISTER DUST COLLECTOR, S/N 60024193

VERTICAL MILLING MACHINES

- 1 - JET JTM-4VS 3 HP VARIABLE SPEED VERTICAL MILLING MACHINE, S/N 8031266
- 1 - BRIDGEPORT 1 HP VERTICAL MILLING MACHINE, S/N 74463

TOOLING

- 1 - HUNTON BG-790 TURRET PUNCH SHARPENER, S/N BLX-1031M (2001)
- 1 - TURRET TOOLING ON 2-TABLES, AND 2-CABINETS
- 2 - AMERICAN STYLE PRESS BRAKE TOOLING

SHOP EQUIPMENT, POWER & HAND TOOLS,
MISC. MATERIAL - STOCK, PALLET RACKING & STORAGE,
OFFICE EQUIPMENT, VEHICLE

Hilco Industrial, LLC

Auctioneers • Liquidators • Appraisers

Headquarters

31555 W. Fourteen Mile Road, Suite 207
Farmington Hills, MI 48334
Ph: 248.254.9999
Fx: 248.254.9995
www.hilcoind.com

Presorted
First Class Mail
U.S. Postage
PAID
Detroit, Mich.
Permit No. 100

Auction is being held in cooperation with



P.O. Box 5086 • York, PA 17405 • ph 717.854.0316

www.irsauctions.com

ONLINE AUCTION

To Bid Online & Register, Please Visit
www.irsauctions.com

Due to plant closure, assets of



LATE MODEL WELL MAINTAINED FABRICATING & METALWORKING MACHINERY



Online Bidding Starts: Friday, June 26th at 10am Local Time

Online Bidding Ends: Friday, July 10th

Assets Located In Bowling Green, Kentucky